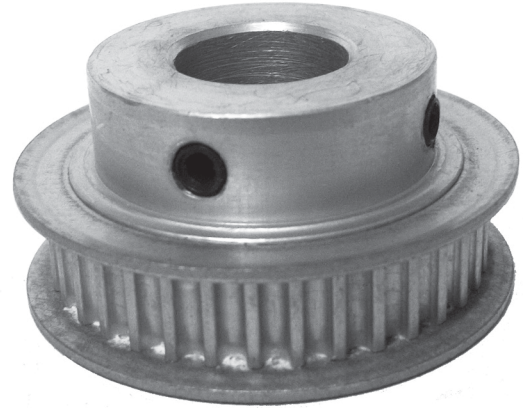


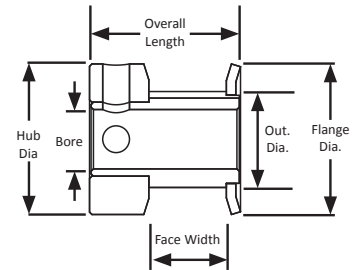
POWERHOUSE™ HTD® TIMING PULLEYS

3 mm Pitch
For 6 mm Wide Belts
Hub and Flanges
Aluminum
Clear Anodized
Finished Bore

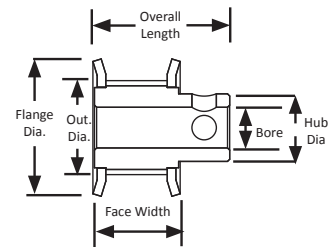


Part Number	No. of Teeth	Type	Pitch Dia. (in)	Out. Dia. (in)	Flange Dia. (in)	Bore (in)	Face Width (in)	Overall Length (in)	Hub Dia. (in)	Set Screw
10-3M06-6CA1	10	6C	0.376	0.346	0.505	0.125	0.327	0.562	0.505	1 x 4-40
10-3M06-6CA2	10	6C	0.376	0.346	0.505	0.188	0.327	0.562	0.505	1 x 4-40
11-3M06-6CA1	11	6C	0.414	0.384	0.530	0.125	0.327	0.562	0.530	1 x 4-40
12-3M06-6CA2	12	6C	0.451	0.421	0.580	0.188	0.327	0.562	0.580	1 x 6-40
12-3M06-6CA3	12	6C	0.451	0.421	0.580	0.250	0.327	0.562	0.580	1 x 6-40
13-3M06-6CA2	13	6C	0.489	0.459	0.610	0.188	0.334	0.572	0.610	1 x 6-40
14-3M06-6CA2	14	6C	0.526	0.496	0.635	0.188	0.334	0.572	0.635	2 x 6-40 @ 90°
14-3M06-6CA3	14	6C	0.526	0.496	0.635	0.250	0.334	0.572	0.635	2 x 6-40 @ 90°
15-3M06-6CA2	15	6C	0.564	0.534	0.685	0.188	0.334	0.572	0.685	2 x 6-40 @ 90°
15-3M06-6CA3	15	6C	0.564	0.534	0.685	0.250	0.334	0.572	0.685	2 x 6-40 @ 90°
16-3M06-6CA2	16	6C	0.602	0.572	0.710	0.188	0.334	0.572	0.710	2 x 6-40 @ 90°
17-3M06-6CA2	17	6C	0.639	0.609	0.740	0.188	0.334	0.572	0.740	2 x 6-40 @ 90°
17-3M06-6CA5	17	6C	0.639	0.609	0.740	0.375	0.334	0.572	0.740	2 x 6-40 @ 90°
18-3M06-6FA3	18	6F	0.677	0.647	0.790	0.250	0.386	0.691	0.442	2 x 8-32 @ 90°
19-3M06-6FA3	19	6F	0.714	0.684	0.815	0.250	0.386	0.691	0.468	2 x 8-32 @ 90°
20-3M06-6FA3	20	6F	0.752	0.722	0.895	0.250	0.386	0.691	0.500	2 x 8-32 @ 90°
22-3M06-6FA3	22	6F	0.827	0.797	0.945	0.250	0.386	0.691	0.562	2 x 8-32 @ 90°
24-3M06-6FA3	24	6F	0.902	0.872	1.025	0.250	0.386	0.691	0.625	2 x 8-32 @ 90°
25-3M06-6FA3	25	6F	0.940	0.910	1.060	0.250	0.386	0.691	0.625	2 x 8-32 @ 90°
26-3M06-6FA3	26	6F	0.977	0.947	1.105	0.250	0.386	0.691	0.625	2 x 8-32 @ 90°
28-3M06-6FA3	28	6F	1.053	1.023	1.173	0.250	0.386	0.691	0.701	2 x 8-32 @ 90°
30-3M06-6FA3	30	6F	1.128	1.098	1.250	0.250	0.386	0.691	0.776	2 x 8-32 @ 90°
30-3M06-6FA5	30	6F	1.128	1.098	1.250	0.375	0.386	0.691	0.776	2 x 8-32 @ 90°
32-3M06-6FA3	32	6F	1.203	1.173	1.323	0.250	0.386	0.691	0.851	2 x 8-32 @ 90°
34-3M06-6FA3	34	6F	1.278	1.248	1.398	0.250	0.407	0.713	0.921	2 x 8-32 @ 90°
36-3M06-6FA3	36	6F	1.353	1.323	1.473	0.250	0.407	0.713	1.000	2 x 8-32 @ 90°
36-3M06-6FA6	36	6F	1.353	1.323	1.473	0.500	0.407	0.713	1.000	2 x 8-32 @ 90°
38-3M06-6FA3	38	6F	1.429	1.399	1.549	0.250	0.407	0.713	1.075	2 x 8-32 @ 90°
38-3M06-6FA4	38	6F	1.429	1.399	1.549	0.313	0.407	0.713	1.075	2 x 8-32 @ 90°
40-3M06-6FA3	40	6F	1.504	1.474	1.625	0.250	0.407	0.713	1.150	2 x 8-32 @ 90°
44-3M06-6FA3	44	6F	1.654	1.624	1.775	0.250	0.407	0.713	1.300	2 x 8-32 @ 90°

TYPE 6C



TYPE 6F



B&B Manufacturing is proud to be a sponsor for the annual FIRST® Robotics Competition. We hope to inspire the next generation of science and technology leaders to build their skill sets in engineering, math, science, and technology.